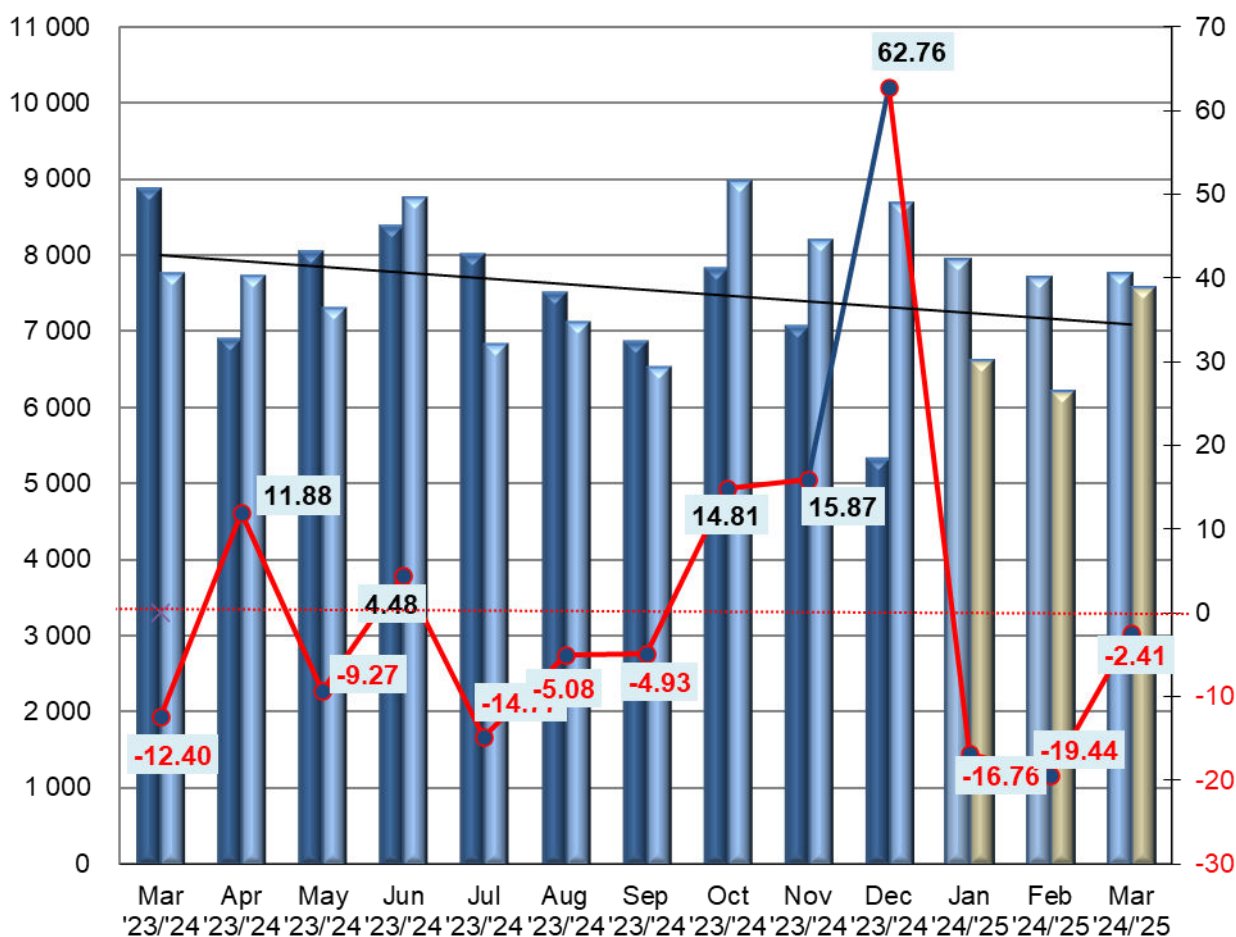


In March 2025, we recorded new passenger car registrations with a total of 7,567 vehicles. Year-on-year, registrations of new passenger cars represent a +2,41%

Registrations of small commercial vehicles (category N1) reached in March 2025 the number of 674 vehicles, a decrease of 20.52% compared to the same month last year with 848 vehicles.

Mesačný trend registrácií nových osobných automobilov v SR 3.2024 - 3.2025



Registrations of individual car brands in Slovakia for the month of March 2025

Category M1 - passenger cars				Category N1 - small commercial vehicles			
Order	Brand	Percent. Market share for March 2025	Ranking shift compared to February 2024	Order	Brand	Percent. Market share for March 2025	Ranking shift compared to February 2024
1.	ŠKODA	20.97%	-	1.	TOYOTA	19.88%	↑
2.	KIA	10.31%	↑	2.	RENAULT	15.43%	-
3.	VOLKSWAGEN	8.88%	-	3.	FORD	14.09%	↓
4.	TOYOTA	7.92%	↓	4.	CITROEN	10.53%	↑
5.	HYUNDAI	7.55%	-	5.	FIAT	9.35%	↓
6.	NISSAN	4.32%	↑	6.	PEUGEOT	9.20%	↓
7.	DACIA	4.02%	↓	7.	MERCEDES-BENZ	7.12%	↑
8.	MERCEDES-BENZ	3.87%	↑	8.	VOLKSWAGEN	4.15%	↓
9.	PEUGEOT	3.63%	-	9.	OPEL	3.56%	↓
10.	CITROEN	3.37%	↓	10.	IVECO	2.67%	-
11.	BMW	2.84%	↓	11.	MAN	2.37%	-
12.	AUDI	2.75%	↑	12.	NISSAN	0.59%	↑

Passenger vehicle registrations by fuel type in March 2025

Fuel type	M1	Percentage %
BEV	352	4.7%
DIESEL	1099	14.52%
DIESEL+HEV	353	4.66%
DIESEL+PHEV	13	0.17%
ETANOL+PHEV	1	0.01%
PETROL	3264	43.13%
PETROL+HEV	2011	26.58%
PETROL+LPG	161	2.13%
PETROL+PHEV	313	4.14%

Truck category up to 12 tonnes - ranking of the top three brands for the month of March 2025 with percentage share of registrations:

Cf.	Brand	Share
1.	IVECO	64.52%
2.	RENAULT TRUCKS	12.90%
3.	MERCEDES-BENZ TRUCKS	9.68%

Registrations in the **N2 category** recorded a level of 31 vehicles in March 2025, up from last year's (March 2024 - 28 vehicles) represents an increase of 10.

Truck category over 12 tonnes - ranking of the top three brands for March 2025

with a percentage share of registrations:

Cf.	Brand	Share
1.	MAN	24.58%
2.	VOLVO TRUCKS	20.00%
3.	MERCEDES-BENZ TRUCKS	18.33%

Registrations in the **N3 category** recorded a total of 240 vehicles in March 2025. In 2024, the number of registered vehicles was 243, a decrease of 1.23% in March 2024.

In the M2 and M3 bus categories, 11 buses were registered in March 2025, an increase of 266.67% compared to 2024 (3 buses)

Cf.	Brand	Share
1.	IVECO BUS	45.45%
2.	ISUZU MAN MERCEDES-BENZ BUS	18.18%

Ing. Pavol Prepiak

President of DDA, Vice President of ZAP SR