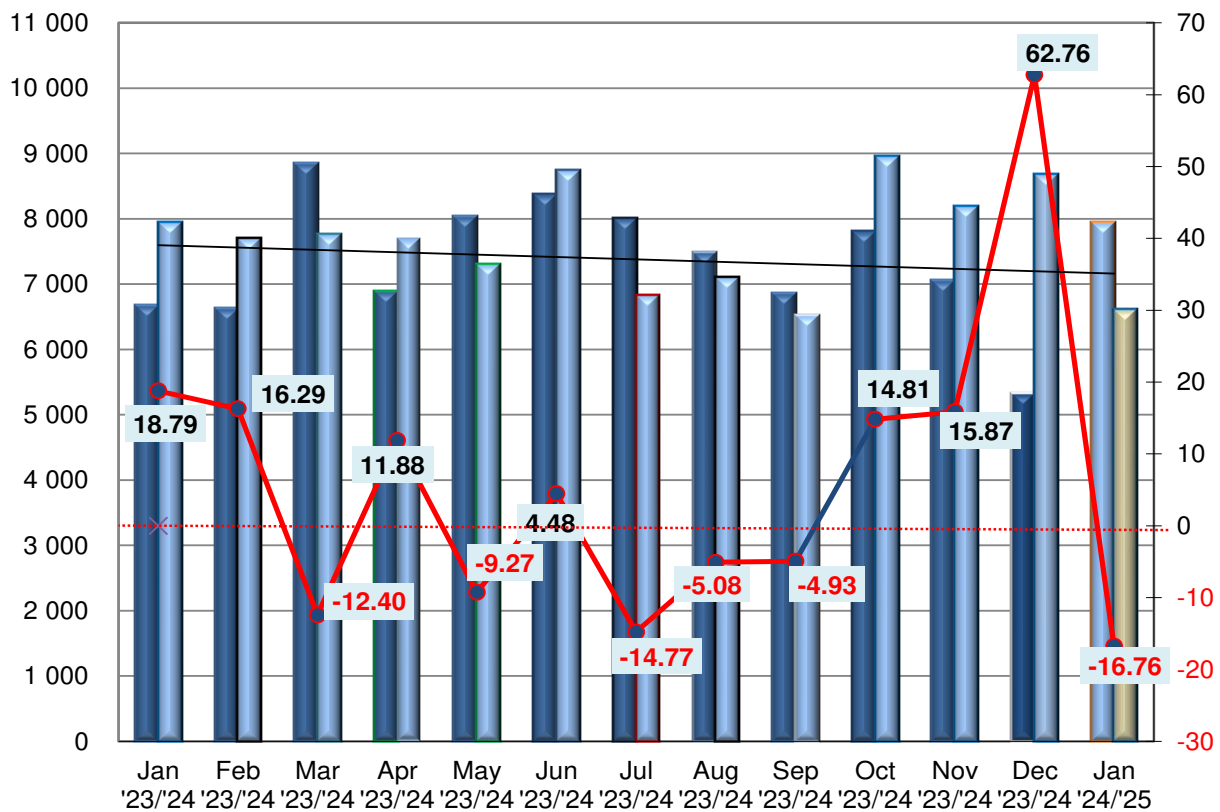


In January 2025, we recorded new passenger car registrations with a total of 6,605 vehicles. Year-on-year, registrations of new passenger cars represent a **o 16,76%**

Registrations of small commercial vehicles (category N1) reached in January 2025 the number of 576 vehicles, a decrease of 29.58% compared to the same month last year with 818 vehicles.

### Monthly trend in new passenger car registrations in Slovakia 1.2024-1.2025



## Registrations of individual car brands in Slovakia for the month of January 2025

Category M1 - passenger cars				Category N1 - small commercial vehicles			
Order	Brand	Percent. Market share for January 2025	Ranking shift compared to December 2024	Order	Brand	Percent. Market share for January 2025	Ranking shift compared to December 2024
1.	ŠKODA	18.40%	-	1.	FORD	18.06%	-
2.	TOYOTA	11.54%	-	2.	PEUGEOT	15.10%	↑
3.	KIA	10.23%	-	3.	CITROEN	12.85%	↑
4.	VOLKSWAGEN	9.66%	↑	4.	RENAULT	9.90%	↓
5.	HYUNDAI	7.27%	↓	5.	FIAT	7.81%	↓
6.	PEUGEOT	4.19%	↑	6.	VOLKSWAGEN	7.12%	↑
7.	BMW	3.72%	↑	7.	TOYOTA	6.94%	↓
8.	MERCEDES-BENZ	3.69%	-	8.	IVECO	6.08%	↓
9.	DACIA	3.30%	↓	9.	MERCEDES-BENZ	5.73%	↓
10.	CITROEN	2.92%	↑	10.	OPEL	5.03%	↓
11.	FORD	2.83%	↓	11.	MAN	1.74%	↓
12.	RENAULT	2.26%	↓	12.	SSANG YONG	1.39%	↓

## Passenger vehicle registrations by fuel type in January 2025

Fuel type	M1	Percentage %
BEV	203	3.1%
DIESEL	1013	15.34%
DIESEL+HEV	343	5.19%
DIESEL+PHEV	11	0.17%
PETROL	2784	42.15%
PETROL+HEV	1898	28.74%
PETROL+LPG	113	1.71%
PETROL+LPG+HEV	1	0.02%
PETROL+PHEV	239	3.62%

**Truck category up to 12 tonnes** - ranking of the top three brands for the month of January 2025 with percentage share of registrations:

Cf.	Brand	Share
1.	IVECO	50.00%
2.	MERCEDES-BENZ TRUCKS	21.43%

Registrations in the **N2 category** recorded a level of 14 vehicles in January 2025, up from last year's (January 2024 - 40 vehicles) represents a decrease of 65.



### Truck category over 12 tonnes - ranking of the top three brands for January 2025

with a percentage share of registrations:

Cf.	Brand	Share
1.	<b>MERCEDES-BENZ TRUCKS</b>	28.63%
2.	<b>VOLVO TRUCKS</b>	27.80%
3.	<b>MAN</b>	16.18%

Registrations in the **N3 category** recorded a total of 241 vehicles in January 2025. In 2024, the number of registered vehicles was 396, a decrease of 39.14% in January 2024.

**In the M2 and M3 bus categories**, 21 buses were registered in January 2025, a decrease of 65.00% compared to 2024 (60 buses)

Cf.	Brand	Share
1.	<b>SOR</b>	47.62%
2.	<b>IVECO BUS</b> <b>MERCEDES BENZ BUS</b>	19.05%

Ing. Pavol Prepiak

President of DDA, Vice President of ZAP SR